



October Ethical Principle: Pursuit of Excellence

Doing everything the best you can, looking for ways to improve

A note from our Principal

Dear Jim Plain Elementary Families,

I wanted to take this opportunity to express how excited I am to be your new principal. I feel so blessed to have the opportunity to be a part of such a fabulous school. I am looking forward to working together with the students, families and the faculty and staff.

I am a graduate of the University of Texas and Texas State University. I began my fourth year as an Assistant Principal at C.C. Mason this year. Before that, I was a teacher and an Assistant to the Principal in Round Rock ISD.

Please know that I am here to serve you. Feel free to contact me at any time. I look forward to meeting each and every one of you very soon.

Sincerely,

Evelyn Crisp



October Calendar:

October 5-9 Fire Prevention Week

October 6 PTA Meeting @ 6:30

October 9 First Grade Field Trip
to Sweet Berry Farms

October 12 No School Columbus Day

October 12 SRP Open House

October 14 Fall Picture Day

October 16 Bosses Day

October 26-30 Red Ribbon Week

Jim Plain Elementary
501 South Brook Dr.
Leander, TX 78641

Phone: 512-570-6600

Fax: 512-570-6605

Absent: 512-570-6614



The Jim Plain Elementary Library has purchased a one-year subscription to TumbleBooks, an electronic library collection for young readers. Go to the Jim Plain Elementary website at <http://plain.leanderisd.org/> and click on Library. Under Reading Sites, you will see TumbleBooks Reading Practice. TumbleBooks can be accessed from any computer that has a Flash plug-in. Most computers and operating systems are already preloaded with Flash. If you are unable to view the books from your home computer, you can download the Flash plug-in for free at www.macromedia.com. The electronic books have sound capabilities, so the computer will read along with the students. In addition, some titles have games and quizzes to go along with the story. If you have any questions, please contact April Stone, Jim Plain Elementary Librarian, at 512.570.6648.

User name is: jimplain Password is: books

Red Ribbon Week October 26-30

Monday, October 26th : Being Drug Free Comes in “Cans” – I Can, You Can, We Can
Wear Red and bring a can of food for the Hill Country Ministries Food Drive

Tuesday, October 27th : Drugs Turn You Inside Out: Wear Your Shirt Inside Out

Wednesday, October 28th : Put A Cap On Drugs: Wear A Cap Or Hat

Thursday, October 29th : Kickin’ Out Drugs: Wear Something Western

Friday, October 30th: Team Up Against Drugs – Wear Favorite Sports Team Shirt



Halloween Reminders

Please remember that our campus is focused on learning. Please save your candy, costumes and painted hair for after school hours. When you go out Halloween evening, be sure to have a flashlight and observe all safety precautions. We want all our little ones returning safely!





BOX TOPS FOR EDUCATION

Help the Pride's Fine Arts and P.E. rise to the TOP!

For every one of these you collect
Fine Arts and P.E. will earn 10 cents
Clip 10 and that is \$1.00!



Last year we collected 10,090 box tops!!

Our goal this year is 12,000 by the end of May!!!

And we have already collected 1,200 box tops since the 1st day of school!!!!

Keep them coming!!!!

What to do:

When you buy a General Mills Box Top product simply tear or cut off the 'Box Top' symbol.

Drop off your Box Top in the grade level's containers in the M.P.R.

Be on the look out for your grade level's progress because....

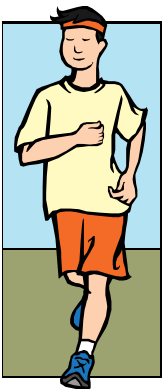
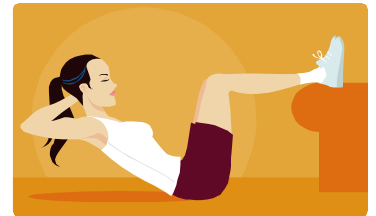
A party will be awarded to the grade level that collects the most box tops!!!!!!

For more details on Box Top products visit: www.boxtops4education.com/AboutBoxTops/Products.aspx

To earn extra points for the Pride visit: www.boxtops4education.com/Promotions/

Mind & Muscle

Recent studies have confirmed that our nation is now experiencing its first generation of obese children. Obesity is commonplace for children in the United States. To help our students incorporate more physical activity in all aspects of their daily lives, we have come up with a fun, yet effective way to get our students to perform strengthening and stretching exercises. We have asked our students to work on their upper body strength, abdominal and lower back flexibility each night. While watching television, the students can perform the following exercises during the commercial breaks: Push ups, Curl ups and back saver Sit and Reach. Commercial break exercises can become a family ritual in all our homes- a great way for everyone to get exercise and spend more time together.



Marathon kids is a 26.2 mile marathon that is going on right now. If you have not sent your child's registration form back in there is still time. This is ongoing from now until February. In our PE classes we have already logged over one mile.

If you have any pool noodles or clean white socks, please send them to PE. There are many games we can play, but many require a noodle for each student. Since we cut them in half, it doesn't matter if they are a little raggedy. The socks can be made into balls to be used in various activities.

District News – October 2009

Dear Parents:

As the cold and flu season approaches, Leander ISD would like to remind families of practical ways they can help prevent the spread of viruses this fall.

Students and staff are encouraged to get the seasonal flu vaccination and the H1N1 (swine) flu vaccination when it becomes available.

Students and staff should stay home when they are ill. They should not return to school until they are fever-free for 24 hours without the use of fever-reducing medications.

Students and their families should practice prevention strategies such as proper hand washing techniques, coughing into the crook of the arm, and using hand sanitizer when soap and water are not available.

LISD will continue to ensure that our schools and buildings are clean and commonly touched surfaces, such as door knobs, toilets and sink handles, stair rails, etc., are cleaned often.

The health and safety of our students and staff is of the utmost importance to each of us. We will continue to focus on decreasing exposure to the seasonal and H1N1 flu, while limiting the disruption to the learning environment.

If you have any questions or concerns, please visit with the campus nurse.

Noticias del distrito – Octubre, 2009

Estimados padres:

Según llega la época de la gripe y la influenza (flu), Leander ISD desea recordarles a las familias sobre maneras prácticas para prevenir el contagio de este virus este otoño.

Se anima a que los estudiantes y empleados se vacunen contra el flu de temporada y el H1N1 (flu porcino) cuando esté disponible.

Los estudiantes y empleados deben quedarse en casa cuando estén enfermos. Pueden regresar a la escuela cuando y ano hayan tenido fiebre por 24 horas sin usar medicinas para reducir la fiebre.

Los estudiantes y sus familiares deben practicar estrategias de prevención, como técnicas de lavarse las manos apropiadamente, toser sobre la parte inferior del codo y usar desinfectantes para la piel cuando no tengan disponible agua y jabón.

LISD continuará sus esfuerzos para que nuestras escuelas y edificios se mantengan limpios y las áreas que se tocan más comúnmente, como las cerraduras, baños y lavamanos y pasamanos en las escaleras, se limpien a menudo.

La salud y la seguridad de nuestros estudiantes son de suma importancia para cada uno de nosotros.

Continuaremos enfocándonos en disminuir la exposición al flu de temporada y al H1N1, mientras limitamos las interrupciones al ambiente educativo.

Si tiene alguna pregunta o preocupación, visite la enfermera de su escuela.

Centers for Disease Control and Prevention recommends:

What can I do to protect myself from getting sick?

There is no vaccine available right now to protect against 2009 H1N1 virus. However, a 2009 H1N1 vaccine is currently in production and may be ready for the public in the fall. As always, a vaccine will be available to protect against seasonal influenza.

There are everyday actions to help prevent the spread of germs that cause respiratory illnesses like influenza. **Take these everyday steps to protect your health:**

- Cover your nose and mouth with a tissue when you cough or sneeze. Throw the tissue in the trash after you use it.
- Wash your hands often with soap and water. If soap and water are not available, use an alcohol-based hand rub.
- Avoid touching your eyes, nose or mouth. Germs spread this way.

- Try to avoid contact with sick people.

If you are sick with flu-like illness, CDC recommends that you stay home for at least 24 hours after your fever is gone except to get medical care or for other necessities. (Your fever should be gone without the use of a fever-reducing medicine.) Keep away from others as much as possible to keep from making others sick.



Creative Problem Solving Program

What is Destination ImagiNation?

Destination ImagiNation is an extracurricular, school-sponsored program that fosters **creativity and team-based problem-solving skills and life skills** for students. Leander ISD DI is open to all students in third through twelfth grades. The goal of Destination ImagiNation is to cultivate the creative problem solving process and make it an unconscious part of students' everyday lives. Teams showcase their solutions at a DI Regional Meet on **Feb. 27 or March 6 or Feb. 20**, (exact date to be determined) place TBA and may advance to state and international competitions in the spring. Teams participate in both the **Team Challenge** and **Instant Challenge** portions of the competition. The "Team Challenge" solution is developed by the team over a *5-7 month period*. The team designs and creates, **without adult assistance**, all props, costumes and other artistic technical elements necessary to bring the presentation to life. But the team's solution is not complete until they receive the final improv prop from the judges just before their presentation! Instant Challenges are designed to teach students how to think quickly, creatively and strategically. At competition the team is given an Instant Challenge they have not seen before. For example, a team may be asked to tell the judge about a mouse's happiest day, create a team story using a given set of items, manipulate materials to build a structure, or develop a non-verbal communication system with team members to complete a given task. Team members have a few minutes to think and develop strategy and a brief period of time to respond to the challenge. Both the Team Challenges and Instant Challenges provide and promote opportunities to develop life-long skills that are essential in our ever-changing world.

How do we sign up?

Turn in the completed registration form to your campus **QUEST teacher ASAP**. Spaces are limited. Only the number of adults who are willing to be Team Managers limits us.

Every attempt will be made to place each student who registers on a team.

You can get the registration form and more information online at

<http://www.leanderisd.org/default.aspx?name=acad.ss.dest.imag>

Transportation Changes

For any changes in transportation send a note to school or call the main office line at 512-570-6600 to let us know how your child will get home. Indicate if your child will go home by bus, car rider (at right side of building), daycare, YMCA, walk/ride bike home, or if you will meet your child inside at the main hallway of building "family on foot".

Please make ALL transportation changes before 2:00

Cafeteria Manager's Choice

For the month of October the choices are:

Monday- Hot Dog

Tuesday- Chicken Patty Sandwich

Wednesday- Mr. Rib Sandwich

Thursday- Popcorn Chicken and mashed potatoes

Friday- Cheese Pizza

Check out our PTA/Volunteer website

Please visit our PTA/volunteer site <http://plain.my-pta.org> to check out volunteer schedules, news and other important information. The site has a wonderful "Click to Volunteer" feature, for all of you who want to volunteer. Anyone can use this site, but in order to volunteer at the school you still must be an approved LISD volunteer. This site allows for better communication between PTA Committee Chairs, Members and Volunteers.



KEEP YOUR CHILDREN'S TEETH HEALTHY THIS HALLOWEEN

- **Avoid treats that are sticky, chewy or hard.**
- **Limit sweets intake to keep cavities in check.** Constant snacking on candy cause tooth enamel to be continuously exposed to acids produced by the bacteria inside the mouth.
- **Brush for at least two minutes twice a day, everyday.** This is particularly important if your child eats candy before going to bed because the dry environment of the mouth at night is an ideal playground for plaque. Make brushing fun by choosing fluoride toothpaste in your child's favorite flavor, playing a favorite song while brushing or rewarding children with stickers for every good brushing. Use a soft brush so it is gentle on the gums and remember to change your brush every 3 months.
- **Floss your way to better teeth.** Flossing removes plaque that can't be removed by brushing alone from under the gum line and between your teeth. Flossing before brushing loosens the plaque and debris, which allows it to be brushed away easily. Check with a dentist to determine when children should begin flossing.

Have a safe and Happy October!!

Christina Booker LVN/JPE Clinic

